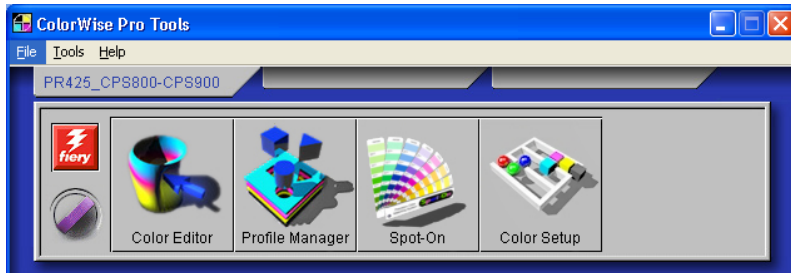


Default Configuration Settings for Océ CPS

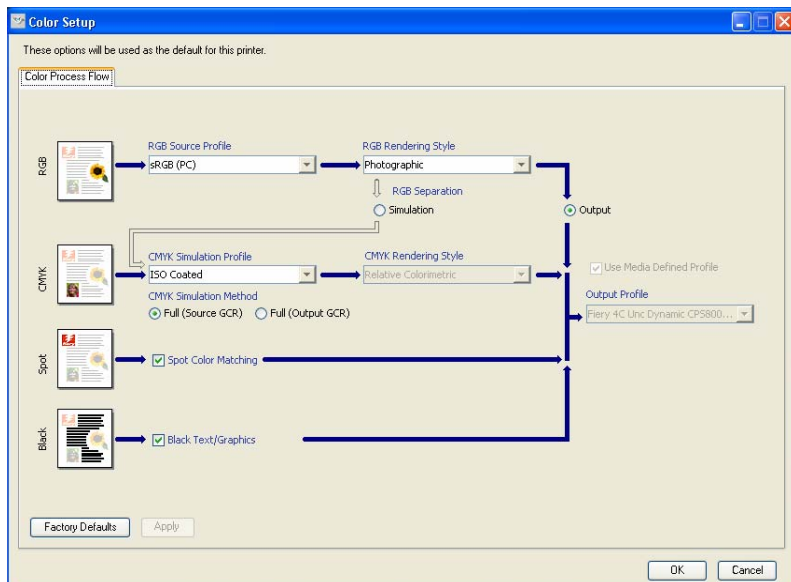
- Default quality mode = Dynamic
(Select <Properties/Image Quality/Quality Mode>)

Default Colour settings in ColorWise

- Open Command Workstation
- Log-in the controller with Administrator authority
- Select <Server / Manage Color...>



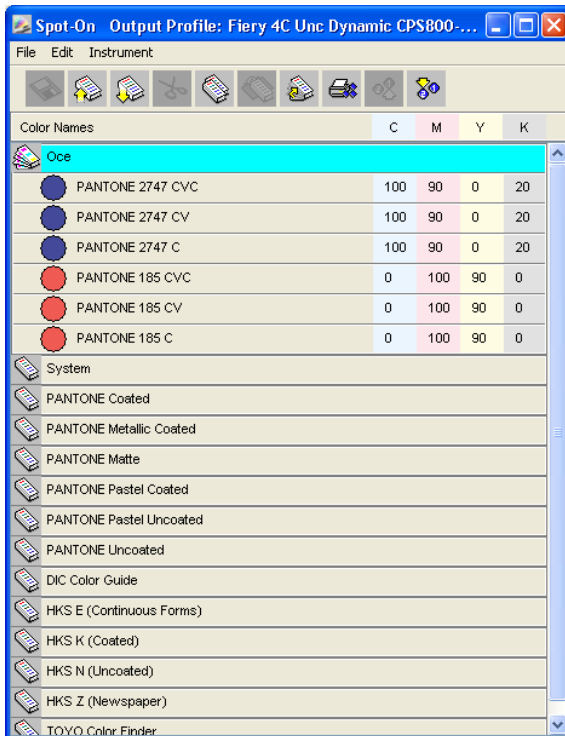
- Select Color Setup
- Check or edit the correct settings:
 - RGB Source profile = <sRGB(PC)>
 - RGB Separation = <Output>
 - CMYK Simulation Profile = <ISO Coated>
 - Full (Source GCR) = on
 - Spot Color Matching = on (only when Spot-On values are adjusted, see next topic)
 - Spot Color Matching = off (when Spot-On is not available or not adjusted)
 - Use media Defined Profile



- Save settings by OK

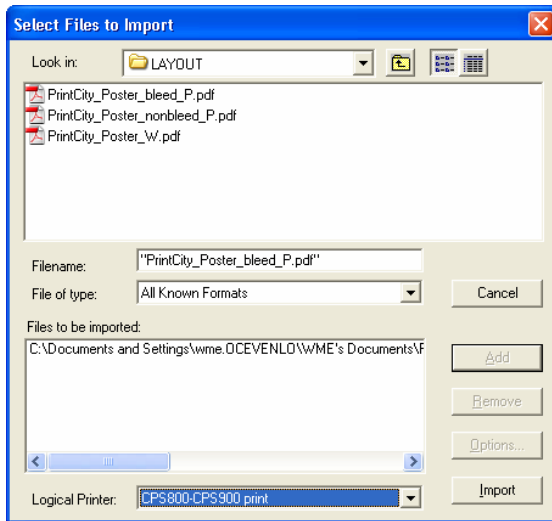
Change Spot-On settings

- Open Command Workstation
- Log-in the controller with Administrator authority
- Select <Server / Manage Color...>
- Select Spot-On
- Select <File / Download>
- Download the file <Oce.icc>
- The values should be:
 - Pantone 185 C : C=0, M=100, Y=90, K=0
 - Pantone 2747 C : C=100, M=90, Y=0, K=20



Downloading direct in the Océ Fiery Controller

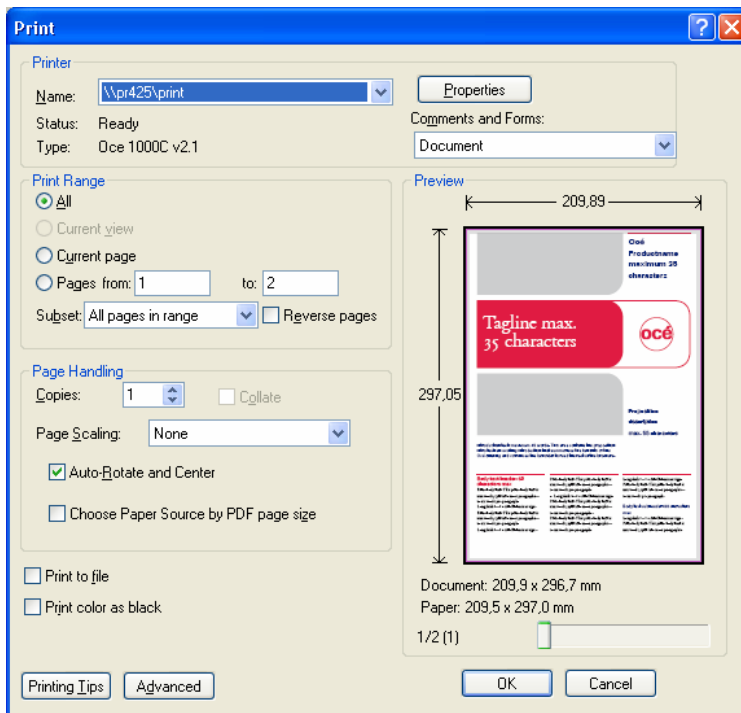
- Open Command Workstation
- Log-in the controller with Administrator or Operator authority
- Select <File / Import / Job...>
- Select jobs, choose <add> and <import> to the desired queue



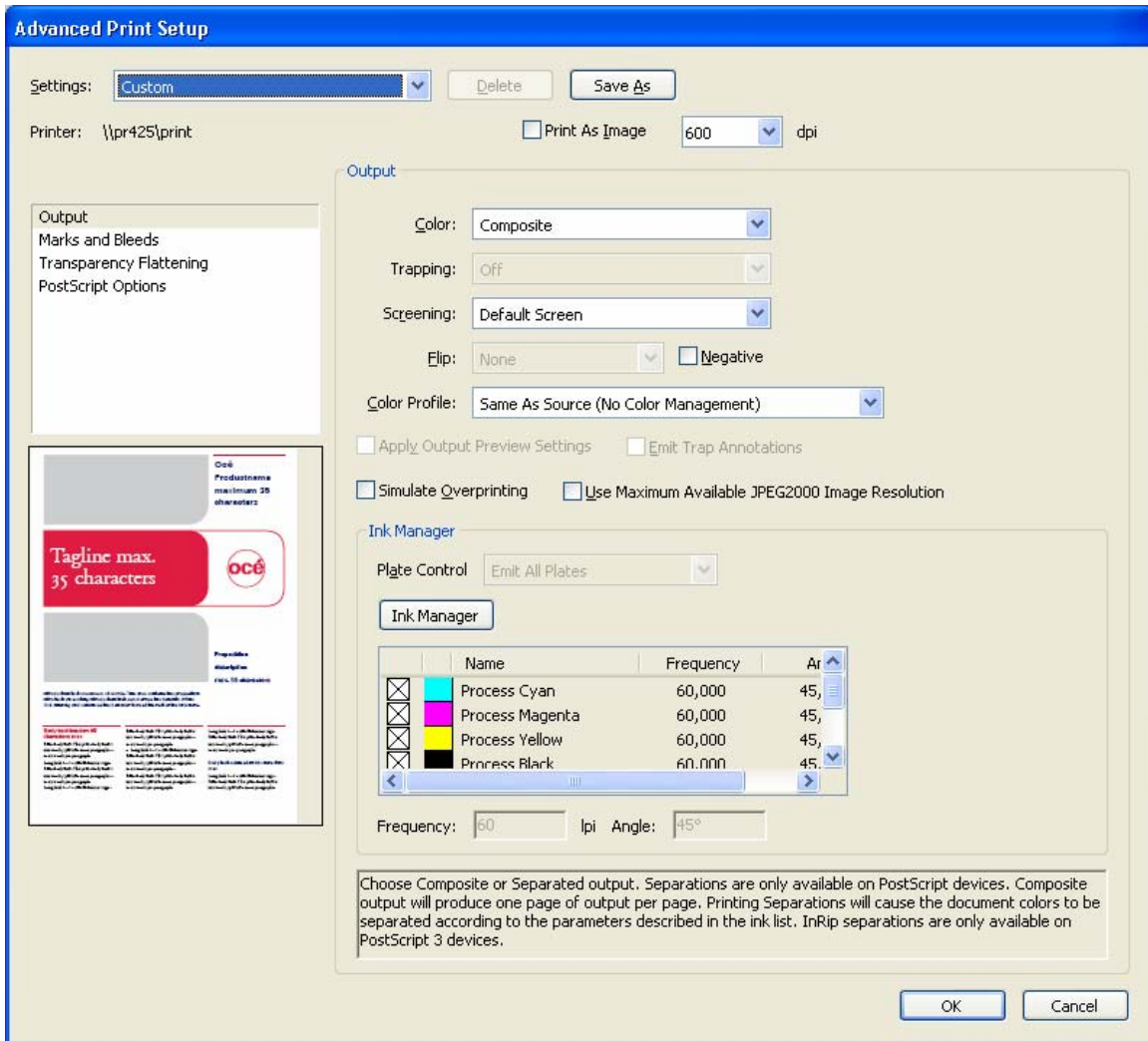
Printing from Adobe Acrobat

Select Print dialogue <File / Print...>

Change properties if desired by using the <Properties> button



Change the advanced settings by using the <Advanced> button



- Select for output:
 - Color: <Composite>
 - Screening: <Default Screen>
 - Color Profile: <Same As Source (No Color Management)>
- Approve settings by OK